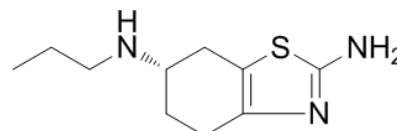


**Product Name** : Pramipexole  
**Cat. No.** : PC-46554  
**CAS No.** : 104632-26-0  
**Molecular Formula** : C<sub>10</sub>H<sub>17</sub>N<sub>3</sub>S  
**Molecular Weight** : 211.3271  
**Target** : Dopamine Receptor  
**Solubility** : 10 mM in DMSO



## Biological Activity

A partial/full agonist of dopamine receptor with K<sub>i</sub> of 3.9/2.2/0.5/5.1 nM for D<sub>2</sub>S/D<sub>2</sub>L/D<sub>3</sub>/D<sub>4</sub>, respectively; also possesses low/insignificant affinity (500–10,000 nM) for the 5-HT<sub>1A</sub>, 5-HT<sub>1B</sub>, 5-HT<sub>1D</sub>, and α<sub>2</sub>-adrenergic receptors; used for treating Parkinson's disease (PD) and restless legs syndrome (RLS).

Parkinson's Disease

Approved

## References

Newman-Tancredi A, et al. J Pharmacol Exp Ther. 2002 Nov;303(2):805-14.

Kvernmo T, et al. Clin Ther. 2006 Aug;28(8):1065-78.

Millan MJ, et al. J Pharmacol Exp Ther. 2002 Nov;303(2):791-804.

**Caution: Product has not been fully validated for medical applications. Lab Use Only!**

E-mail: tech@probechem.com